

2025

NEWELL • TRAVERS • FORTY MILE



GUIDE

Official Tournament Handbook
Schedule • Rules • Prizes • Sponsors

WWW.SAWT.CA | [@SAWTFISHING](https://twitter.com/SAWTFISHING)

WELCOME TO THE 2025 SAWT TOURNAMENT SEASON

Established in 1996 by a dedicated group of passionate anglers, the Southern Alberta Walleye Trail (SAWT) has evolved into one of Western Canada's most respected grassroots tournament series. What began as a few friendly competitions has grown into a community-driven circuit that brings together families, friends, and fishing enthusiasts from across the Prairies and the northern United States.

The SAWT is more than just a tournament trail — it's a family. Teams consist of spouses, siblings, parents and children, and even grandparents fishing alongside their grandchildren. The result is a welcoming and inclusive environment where competition, camaraderie, and conservation go hand-in-hand.

Each year, anglers compete across some of Alberta's best fisheries, including Newell, Travers, and Forty Mile Reservoirs. These events showcase the region's incredible walleye waters while supporting local communities and promoting catch-and-release practices that protect the future of the sport.

In 2025, the SAWT continues to grow — not only in participation but in purpose. With over \$70,000 in cash and prizes on the line, plus a season-long Championship Shootout, this year's trail is shaping up to be our biggest yet. Thanks to the generous support of sponsors, volunteers, and community partners, the SAWT remains committed to making tournament angling accessible, rewarding, and family-focused.

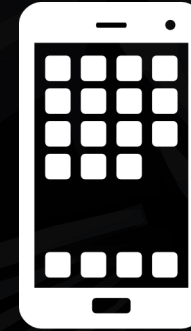
Whether you're here to compete, to learn, or to cheer on your favorite team, we welcome you to another exciting season. Tight lines, and we'll see you at the lake!

DISCOVER PREMIUM FISHING GEAR AT [FISH.SHIMANO.COM](https://fish.shimano.com)



HAVE YOU REGISTERED EARLY?

PRESENT YOUR ENTRY ID AT REGISTRATION NIGHT TO CONFIRM YOUR ENTRY AND RECEIVE YOUR BOAT NUMBER



SCAN ME WITH YOUR PHONE

REGISTER FROM YOUR PHONE

[HTTPS://REGISTER.SAWT.CA/REGISTER/](https://register.sawt.ca/register/)



JOIN US ON FACEBOOK AND SHARE YOUR EVENT PHOTOS

[FACEBOOK.COM/WALLEYETRAIL](https://facebook.com/walleyetrail)

2025 TOURNAMENT SCHEDULE

MAY 17-18

LAKE NEWELL & SCOPE LAKE



IMPORTANT TIMES!

NEWELL LAKE SAILING CLUB		
MAY 16th	4:00 PM 6:00 PM	REGISTRATION RULES MEETING <small>*mandatory</small>
6:00 AM BOAT LAUNCH CHECK-IN OPENS		
MAY 17th	FLIGHT 1 FLIGHT 2	7:00 AM - 3:00 PM 7:30 AM - 3:30 PM
6:00 AM BOAT LAUNCH CHECK-IN OPENS		
MAY 18th	FLIGHT 2 FLIGHT 1	7:00 AM - 3:00 PM 7:30 AM - 3:30 PM

2025 TOURNAMENT SCHEDULE

PRE-FISHING

ALL BOATS NEED TO BE OFF THE WATER BY 2:00 PM ON MAY 16TH

NO FISHING ALLOWED
BOUNDARY GPS COORDINATES

2A 50°23'58.3"N 111°59'12.7"W

2B 50°23'41.1"N 111°58'53.8"W

NO FISHING ALLOWED
BOUNDARY GPS COORDINATES

1A 50°29'22.0"N 111°56'13.9"W

1B 50°29'17.2"N 111°56'28.2"W



2025 TOURNAMENT SCHEDULE

JUNE 21-22

TRIVERS RESERVOIR & CLEAR LAKE

A & E MOTORSPORTS

IMPORTANT TIMES!

LITTLE BOW PROVINCIAL PARK GROUP SITE CAMPGROUND		
JUNE 20th	4:00 PM	REGISTRATION
	6:00 PM	RULES MEETING
6:00 AM BOAT LAUNCH CHECK-IN OPENS		
JUNE 21st	FLIGHT 1	7:00 AM - 3:00 PM
	FLIGHT 2	7:30 AM - 3:30 PM
6:00 AM BOAT LAUNCH CHECK-IN OPENS		
JUNE 22nd	FLIGHT 2	7:00 AM - 3:00 PM
	FLIGHT 1	7:30 AM - 3:30 PM

2025 TOURNAMENT SCHEDULE

PRE-FISHING

ALL BOATS NEED TO BE OFF THE WATER BY 2:00 PM ON JUNE 20TH

NO FISHING ALLOWED
BOUNDARY GPS COORDINATES

2A 50°13'33.5"N 112°55'22.1"W

2B 50°13'25.9"N 112°55'12.0"W

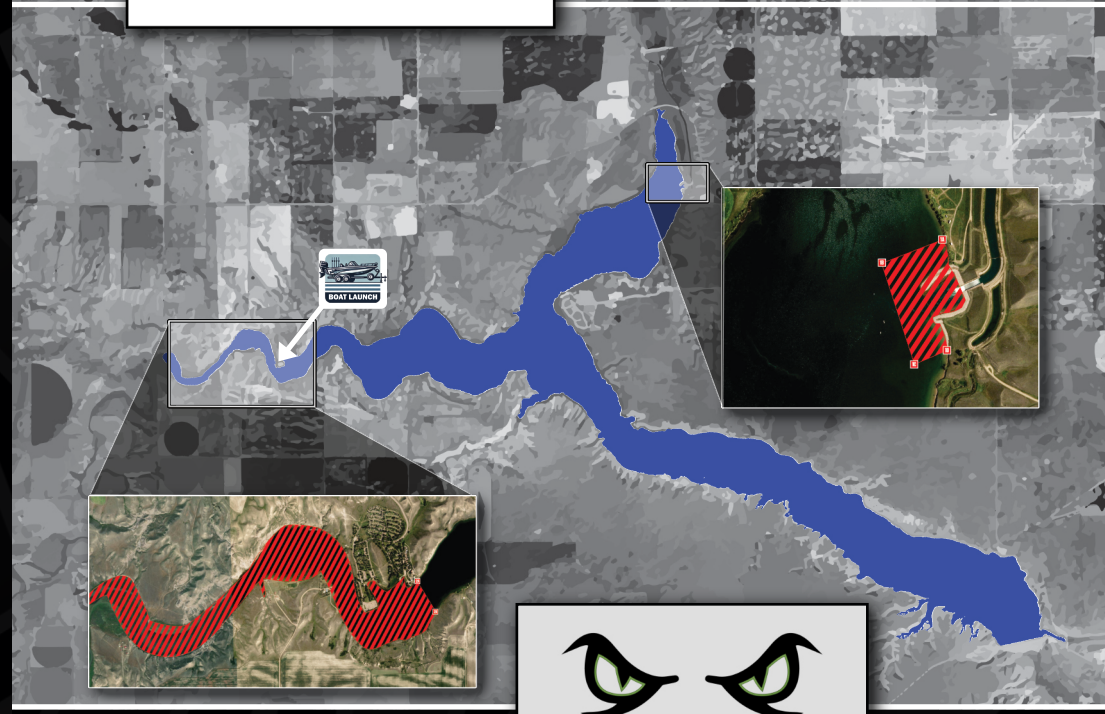
NO FISHING ALLOWED
BOUNDARY GPS COORDINATES

1A 50°15'24.0"N 112°49'09.0"W

1B 50°15'20.7"N 112°49'18.4"W

1C 50°15'11.7"N 112°49'13.5"W

1D 50°15'12.7"N 112°49'08.5"W



2025 TOURNAMENT SCHEDULE

JULY 5-6

40 MILE RESERVOIR & MURRAY LAKE



IMPORTANT TIMES!

40 MILE PARK GROUP SITE CAMPGROUND		
JULY 4th	4:00 PM	REGISTRATION RULES MEETING <small>*MANDATORY</small>
	6:00 PM	
6:00 AM BOAT LAUNCH CHECK-IN OPENS		
JULY 5th	FLIGHT 1	7:00 AM - 3:00 PM
	FLIGHT 2	7:30 AM - 3:30 PM
6:00 AM BOAT LAUNCH CHECK-IN OPENS		
JULY 6th	FLIGHT 2	7:00 AM - 3:00 PM
	FLIGHT 1	7:30 AM - 3:30 PM

2025 TOURNAMENT SCHEDULE

PRE-FISHING

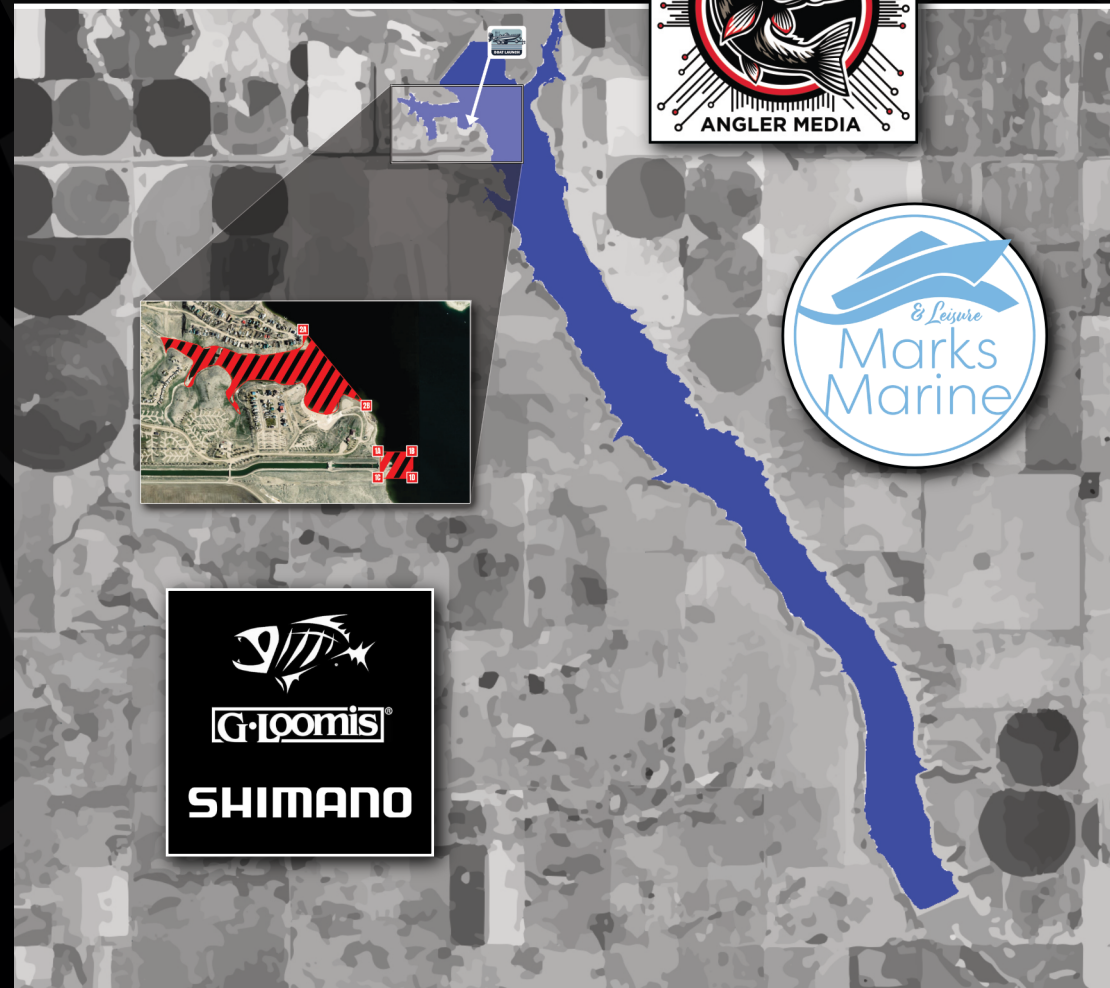
ALL BOATS NEED TO BE OFF THE WATER BY 2:00 PM ON JULY 4TH

NO FISHING ALLOWED
BOUNDARY GPS COORDINATES

- 1A** 49°40'14.5"N 111°25'15.9"W
- 1B** 49°40'14.5"N 111°25'09.4"W
- 1C** 49°40'11.0"N 111°25'15.9"W
- 1D** 49°40'11.0"N 111°25'09.4"W

NO FISHING ALLOWED
BOUNDARY GPS COORDINATES

- 2A** 49°40'31.5"N 111°25'33.2"W
- 2B** 49°40'20.8"N 111°25'19.3"W



2025 TOURNAMENT SCHEDULE

CHAMPIONSHIP SHOOTOUT A&E MOTORSPORTS

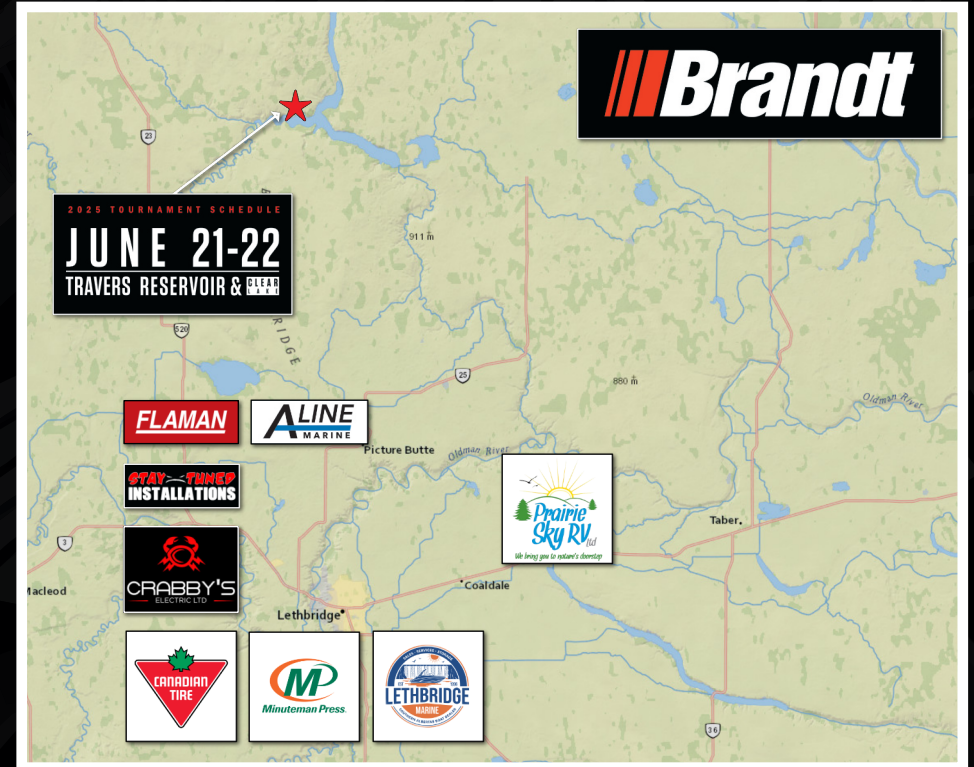
TO QUALIFY, YOU MUST FISH ALL THREE TOURNAMENTS. THE SHOOTOUT TEAM MUST COMPETE WITH ONE OF THEIR ORIGINAL PARTNERS.

\$15,000

**DATES & TIMES
TO BE ANNOUNCED**

SPONSOR APPRECIATIONS

LETHBRIDGE AREA



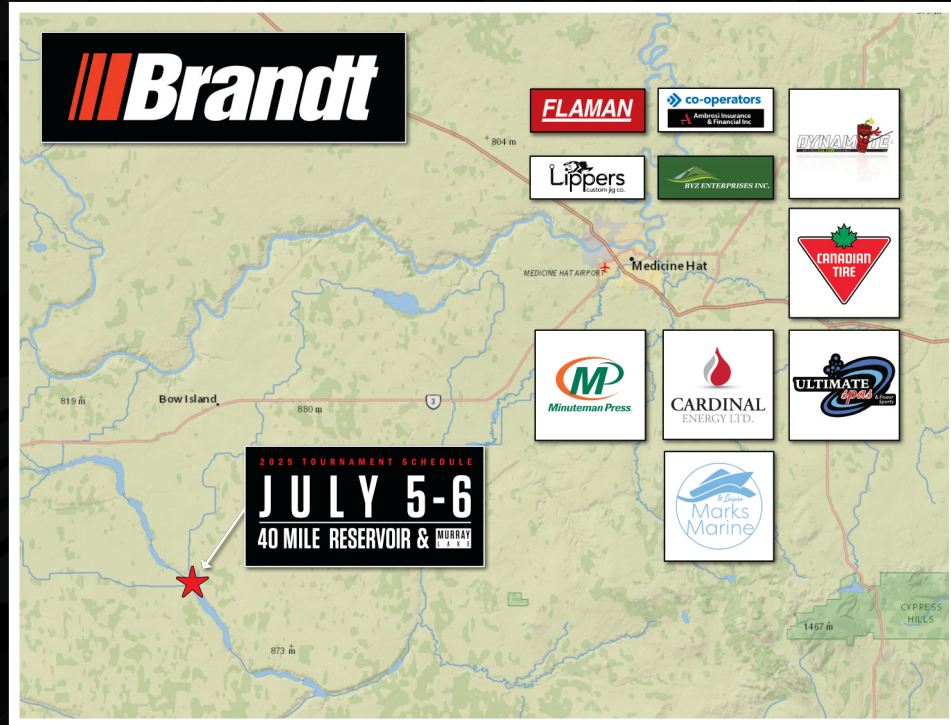
SHOP NEW LURES AND GEAR NOW AT RAPALA.CA



THANK YOU FOR SUPPORTING THE BUSINESSES THAT SPONSOR SAWT

SPONSOR APPRECIATIONS

MEDICINE HAT AREA



SPONSOR APPRECIATIONS

CALGARY & BROOKS



STEP INTO COMFORT AND DURABILITY — VISIT KENETREK.CA



THANK YOU FOR SUPPORTING THE BUSINESSES THAT SPONSOR SAWT

GEAR UP WITH PERFORMANCE APPAREL AT STRIKERBRANDS.COM



THANK YOU FOR SUPPORTING THE BUSINESSES THAT SPONSOR SAWT

T O U R N A M E N T R U L E S

1. FAIR PLAY

Anyone caught breaking the rules of the SAWT tournaments will be disqualified from all SAWT Tournaments.

2. ELIGIBILITY

Anyone can participate in the SAWT Events. All persons 16 years or older are eligible to enter. Entrants 16 years and under must be accompanied by parent or guardian. SAWT is a 2-person team event consisting of one captain and one partner

3. FEES

You must be an active registered member of the SAWT association and in good standing in order to participate in the tournaments.

- Membership and registration fees must be paid by EMT to SAWTfishing@gmail.com If you wish to pay by another format, you must get approval from the SAWT treasurer by emailing SAWTfishing@gmail.com or calling 403-554-4537.
- Entry fee will only be returned if notice is given seven (7) days prior to the start of the tournament
- Registration and bag pick up will be held on the day before the posted tournament day from 4:00pm - 5:00pm. All waiver forms and registration forms must be completed by the captain and the partner and the team member operating the boat must provide verification of their boating license where required by law.

4. WAIVER

Promoters and organizations assisting in the tournament operation, their agencies and agents are not responsible for death, injury, damage, liability, theft, fire, or any loss to any entrants. Each entrant, upon signing an entry form, will in effect be signing a waiver. Waiver will also be required to acknowledge SD card, rules and regulations have been read and understood prior to tournament entry.

5. REQUIREMENTS AND SAFETY

- Each contestant will be in possession of a valid Alberta fishing license.
- Each entrant will be required to have a U.S. Coast Guard or Canadian approved personal flotation device and is you will be urged to always wear it when in the boat. It is mandatory that personal flotation devices be worn during the motoring up during flight releases and when returning to the launch at the end of each day. Personal Flotation Devices must be worn while your main motor is under power.
- All contestants are required to observe Canadian rules and regulations concerning safe boating.
- All boats will be required to meet U.S. Coast Guard or Canadian safety regulations.
- All boats must carry a state or provincial registration in accordance with the regulations of the boat owner's home state or province.
- Boats may be equipped with electric trolling motors.
- Electronic and electrical depth finders, sonars, and live scopes are permitted.
- In the case of high winds, tournament play will be delayed or canceled at any wind speed of 40 km/hr. or higher. If tournament play has started and wind speed accelerates to 40 km/hr. or higher while boats are on the water, it is highly recommended that you exit the water as soon as safely possible

T O U R N A M E N T R U L E S

6. PROTESTS

- Any contestant has the right to make a protest against another contestant. A protest email must be sent via email to the SAWT president within 1 hour of the close of the tournament day. The email to send the protest to is SAWTfishing@gmail.com
- Email must include the protesters full name, cell number and boat number, the boat number in which the protest is being launched against, a general description of the area of the lake in which the boat in question was at the time of the incident, and the incident witnessed.
- A \$100.00 protest fee will be required to accompany any formal protest. The fee will be returned if the protest is found to be valid by the protest committee.
- Any contestant involved with the protest must be on call for three hours following the end of the fishing day. The decision of the SAWT president is final.

7. FISHING HOURS AND STARTING

- Fishing times will be dependent on the number of boats registered and will be discussed at the rule meeting. It can be anticipated that the fishing day will start between 7:00 a.m. and will end at 3:00 p.m. for the fishing dates posted, unless time changes are discussed at the rules meeting.
- All boats must be inspected by the SAWT executive and/or the Marshall boat before they leave in their respective flights. 8 hours of fishing time is allowed for each flight. Contestants who return late will be penalized 20% of their total weight for each minute late and will be disqualified from any large walleye prize.
- Boats will be leaving in two flights. The flights will alternate each day.
- Multi-lake tournaments require that each boat designate which lake they wish to fish on at the time of registration on your registration form. You must fish in that lake for both days of the tournament.

8. BOAT IDENTIFICATION AND SECURITY

- One member of each boat entry must attend the rules meeting on the day before the tournament start date at the specified location for each tournament.
- Random boat numbers will be distributed at the registration/rules meetings and boat stickers must be placed on the port (passenger) side windshield of the boat. All boats are required to display the decal with the number for the purpose of identifying you/it as a tournament angler/boat for easy identification by tournament officials.
- Each boat is required to pass a boat inspection each day of the tournament prior to start times.
- Boat inspections will begin before all boats enter the water each morning of tournament days. It is your responsibility to be on time and allow for traffic line-ups and waiting times. Boat inspection times will be discussed at the rules meeting and will be dependent on the number of entries for each tournament.
- Each boat is required to possess personal flotation devices (PFD) for each person(s) on board.
- Each boat will be required to meet Canada Coast Guard Requirements including having a bailing bucket, sounding device, and oars.
- Each boat is required to have SMRID & EID stickers and they must be up to date, or you will not be able to fish.
- During boat inspection, a colored tie will be tied to your boat and must be visible during the entire tournament day

A&E
MOTORSPORTS

STAY TUNED
INSTALLATIONS

Okotoks
Sobers

Brandt


CRABBY'S
ELECTRIC LTD

T O U R N A M E N T R U L E S

9. FISHING

- Each angler will be allowed to have only one in line the water at all times. Spare rods and equipment may be carried in the boat; however, spare rods and equipment MAY NOT be laying over any part of the boat at any time. More than two lines in the water for any reason will result in disqualification.
- Bait must be in accordance with the Fish and Wildlife regulations for the body of water in which the tournament is held.
- An angler must not leave the boat to land a fish or untangle equipment for any reason through the tournament fishing day.
- The SAWT is hosting catch and release picture tournaments.
- This event is catch and release only. Eligible species include Walleye & Sauger only. All other species of fish caught during a SAWT event must also be released. WE STRONGLY RECOMMEND BARBLESS HOOKS DURING TOURNAMENT DAYS.
- All measuring boards will be provided by SAWT, and one will be given to each team during boat inspection each day of the eve

10. PRE-FISHING, FISHING HOURS AND STARTING TIMES

- Pre-fishing will have no restrictions up until the day before the tournament. Anglers must be off the water by 2pm on the day before the tournament start date.
- FISHING TIMES: Flight times will be determined by the number of boat entries for each tournament. Start and finish time will be discussed at the rule's meetings. Flights will be reversed on the second tournament day.
- Upon the start, each boat will be required to pass through two (2) buoys in a NO WAKE ZONE. ONCE CLEAR OF THE BUOYS, teams may throttle up. Slower boats are asked to SAFELY/IMMEDIATELY travel closer to the shoreline to allow boat traffic to safely pass. Upon finishing, each boat will be required to THROTTLE DOWN PRIOR TO again passing through the two (2) buoys in a NO WAKE ZONE and CHECK IN with tournament officials. BUOYS ARE PLACED ACCORDINGLY FOR SAFETY PURPOSES. ANY BOAT FOUND NOT ADHERING TO THE FOREGOING RULE MAY BE DISQUALIFIED FROM THE TOURNAMENT. REMEMBER - SAFETY IS PARAMOUNT!
- Teams returning late to the finish line will lose 20% of their weight every minute they are late. After five (5) minutes, the day's total weight will be DISQUALIFIED. All measuring boards and fishing forms in their bag (provided by the SAWT) are to be returned at the end of each day.
- At the discretion of the SAWT executive, tournament days may be shortened, postponed or canceled due to unsafe weather or water conditions.
- Fishing is prohibited by any method within 23 meters downstream of the lower entrance of any fishway, canal, obstacle or leap. Weirs and dams are considered obstacles.

11. AWARDS & PRIZES

- Proceeds from the tournament will be distributed as prizes in accordance with the prize set out by the SAWT. The SAWT will be awarding all prizes for the event.
- Prize amounts are based on a full field of 160 anglers (80 teams). If the tournament doesn't fill, the payout percentages for each paid position will remain the same and will be adjusted accordingly.
- Awards will be announced by the executive of the SAWT.

T O U R N A M E N T R U L E S

- In the event of a tie for Biggest Fish, the tie break will be decided by a re-evaluation of the biggest fish pictures, by the SAWT executive. Their decision is final.
- Team of The Year is based on the Angler or the team with the most points after all the tournaments are complete. Each team must fish 2 tournaments together. If you or your partner are unable to fish a tournament, one team member may fish with another partner. The points from that tournament will be awarded to your team points. Under no circumstances may both team members fish with different partners during the same tournament and take the higher points for their team total. In the event that an angler is unable to fish with the same partner for all 3 tournaments, they may qualify for the shootout after the following requirements have been met:
 - The angler must speak to the SAWT executive prior to the first tournament about fishing with different partners for approval.
 - In order to qualify for the shootout, you must fish all three tournaments. If the angler qualifies for the shootout tournament, they must fish the shootout tournament with one of the partners they qualified with in the previous 3 tournaments.
 - If the 3 anglers from the previous 3 tournaments are unavailable to fish the shootout tournament, the qualifying angler may choose a partner from the SAWT registered membership list. They must be a current registered member.
- Tournament organizers reserve the right to adjust the number of entries.
- The SAWT executive may implement a polygraph policy for any tournament where they see it necessary. If it is determined that dishonest practices have occurred during a tournament, the SAWT executive has final authority over the decision of the disqualifications and alternate winners.

12. OTHER RULES

- By registering and participating in the tournament, all participants agree to abide by the rules and regulations they have received as set out by the SAWT.
- This tournament is catch and release ONLY. Please handle all fish caught with care. The harvesting of any fish will result in disqualification. The goal is to achieve a 0% mortality rate.
- All anglers are strongly urged to only use barbless hooks or have barbs pinched.
- All anglers are strongly urged for the health and preservation of the fish being caught to fish no deeper than 25' at all times.
- All boats coming into Alberta require inspection to prevent the movement of aquatic invasive species. If you live outside of Alberta and are planning to attend any SAWT tournament you must provide proof of passing an inspection (proof of inspection sheet) at time of registration. SMRID & EID stickers must be up to date, or you will not be able to fish.
- Anglers can only submit catches that their team of 2 anglers have caught themselves. Only two people are allowed in the boat during tournament hours except as expressly waived by the SAWT executives and members.
- All fish entered for this event must be caught via angling i.e., using hook, line, rod and reel. At no time will fish caught by non-angling (i.e., use of traps, trap nets or cages) be allowed to be entered. Usage of a landing net to land a hooked fish is allowed.
- Marshall can ask for a picture of your live well(s) at any time during the tournament.
- Each contestant must have in their possession a valid fishing license for their respective jurisdiction or be exempt under the regulations of their jurisdiction.
- Each contestant must conform to the fishing rules and regulations that are in place for the jurisdiction in which they are fishing.
- Promoters and organizers (including their agencies or agents) hosting/assisting in the tournament



TOURNAMENT RULES

- Promoters and organizers (including their agencies or agents) hosting/assisting in the tournament operation are not responsible for death, injury, damage, liability, theft, fire flood or any loss to any participants, families or friends. Each entrant is required to sign a waiver form before being allowed to compete in a SAWT tournament. Once signed, this waiver will stay in effect for the entire tournament season in which you are competing.
- Any angler found to be cheating will be disqualified from the tournament. SAWT also reserves the right to ban anglers from competing in future events.
- Any boat found in possession of alcohol or drugs will be DISQUALIFIED from the tournament.
- In the event of disqualification, any paid entry fees will be forfeited and not refunded.
- A boat may not come into contact with any other boats except the officials on the water. Being sports inded anglers, please give other boats appropriate courtesy/consideration while fishing and/or while under throttle.
- All questions or concerns relating to the rules of this tournament are to be referred to the President of the SAWT and the SAWT executive. Their decision will be final in all cases. No other person can be considered a spokesman for the rules during the tournament. The contact email for this event is SAWTfishing@gmail.com
- All rules have loopholes. It is our intention to provide an honest sportsmanlike tournament. In the interest of good sportsmanship, contestants are reminded the spirit of the rule will prevail in all judgments. (q) To ensure the best chances of survival for the fish, all participants are to handle fish safely. Blatant abuse to fish or the resource is reason for disqualification
- All participants must follow boating safety regulations in your jurisdiction.

THE TOURNAMENT ADMINISTRATION/COMMITTEE RESERVES THE RIGHT TO DISQUALIFY ANY TEAM FOR RULE INFRACTIONS IF THE SITUATION WARRANTS SUCH ACTION. SAWT MEMBERSHIPS MAY ALSO BE REVOKED DUE TO RULE INFRACTIONS AND/ OR "UNSPORTSMANLIKE BEHAVIOR" DURING TOURNAMENTS/EVENTS. THE SAWT ADMINISTRATION RESERVES THE RIGHT TO DECLINE ANY ANGLER FROM ENTERING A TOURNAMENT WHERE THEY HAVE BEEN PREVIOUSLY DISQUALIFIED AT ANY OTHER FISHING TOURNAMENT/EVENT. THE SAWT EXECUTIVE RESERVE THE RIGHT TO CALL AN EMERGENCY MEMBER MEETING TO VOTE ON CHANGES TO RULES AT ANY TIME

TOURNAMENT RULES

App Based Tournaments

The eTournament Fishing app is mandatory for all SAWT events. Available for both iPhone and Android, at least one team member must download and install the app. It is strongly recommended that both team members install the app on separate devices as a backup. The cost to use the app is \$4 US funds, which is good for 30 days.

Teams must consist of two anglers sharing a single motorized watercraft (minimum 12ft in length, 10hp motor). Anglers under 18 must be paired with a parent or guardian. Personal watercraft (Jet Skis), kayaks, float tubes, and other non-motorized single-occupant vessels are not permitted.

All SAWT events utilize a Catch, Photo, Release Video (CPRV) format unless otherwise specified by SAWT staff. Holding fish on stringers, in baskets, coolers, or live wells is strictly prohibited during tournament hours. Possession of any fish species (excluding minnow-type bait) is also forbidden. All fish must be immediately released after digital documentation. This CPRV format promotes conservation and eliminates fish harvest. LiveWell and portable containers are not permitted to hold any fish species other than minnow-type bait.

Event registration is handled exclusively through the eTournament Fishing app. Locate and select the desired SAWT tournament within the app. Only one team member needs to register the team. Ensure accurate cell phone number entry as this is crucial for team recognition and authorized fish submission. Registration for all tournaments will close at 6:00 pm night before the tournament. Team member changes are permitted within the app before the deadline. Post-deadline partner changes require contacting SAWT President, Sheldon Unreiner • (After registering in the eTournament Fishing app, your team number and a unique PIN will be automatically generated. This PIN is for accessing the live leaderboard and ensures anonymity until after the event. Do not share your PIN. SAWT staff will not disclose your PIN to other participants until the tournament's conclusion.

Official SAWT measuring boards are mandatory and the only boards permitted. Each team will receive a board and boat number on the morning of Day 1. Boards must be returned to SAWT staff at the end of each day. Failure to return a board will incur a \$100 replacement fee.

Tournament prizes and awards are determined by the number of participating teams. Prizes will be awarded at the tournament's conclusion during an awards ceremony, if feasible. Prize money will be distributed at the conclusion of the event when possible. If prize checks are issued, they will be mailed to winning teams within 7-10 business days following the event. Winners must cash their checks within 60 days of issuance, or the prize money will be forfeited to the SAWT

In case of a tie, SAWT will look at the fish weighed in from both teams to determine the greater weight as this will declare the winner.

All participants must adhere to safe boating practices, applicable laws, and the rules of the governing body of water. Alcohol, marijuana products, and illegal drugs are prohibited in tournament boats and vehicles during fishing hours.



T O U R N A M E N T R U L E S

During severe weather (thunderstorms, lightning, high winds, etc.), participants may seek shelter at the nearest shoreline until it's safe to resume fishing. Leaving boats during tournament hours is prohibited except for severe weather or with SAWT staff permission. If severe weather is predicted, SAWT executives will send a message through the eTournament app, signaling all participants to immediately stop fishing, return to the launch, and load their boats. This officially ends the day's fishing.

Cellular phones are allowed only for safety, documenting violations, and the eTournament Fishing app. Boats should maintain a respectable distance (approximately 25 feet) while fishing near each other.

All participants are responsible for reading and understanding the tournament rules. Participants must have a functional cell phone with sufficient power and storage for the eTournament Fishing app. Watching the eTournament Fishing app tutorials before Day 1 is strongly encouraged.

All SAWT tournament participants must have their boats trailered and be off the water by 2:00 PM on the Friday before the tournament. Plan accordingly. In emergencies or unforeseen circumstances preventing compliance, contact SAWT staff before 2:00 PM at 403.928.1622, 403.554.4537, 403.899.6349, or 403.504.9035 for guidance. Teams violating this rule will be limited to weighing four fish per day during the tournament.

Tournament hours are listed for each event in the app. Official time (considering time changes) will be based on GPS/cellular device time; no other timekeeping methods will be accepted. The app prevents fish submissions before the start time or after the end time each day. Fishing outside scheduled tournament hours is strictly prohibited and will result in disqualification.

All watercraft used in SAWT tournaments must undergo a mandatory Aquatic Nuisance Species (ANS) inspection and comply with regulations for the specific body of water. Participants are solely responsible for following ANS procedures and being ready by the official start time. Teams without a pre-event inspection or those failing inspection will not be allowed to launch. Pre-event ANS tagging is strongly recommended.

A mandatory rules meeting will be held on the day before each event. At least one team member must attend to check in and receive their tournament bag which includes the rules and boat sticker.

A mandatory boat inspection will occur each morning before launch. Start time will be discussed at the rules meeting but anticipate inspections to start at 5:30-6:00 AM, typically while participants are on the launch line. Please have all live wells open and ready for inspection to expedite the process.

The official start time is listed in the app but may be adjusted based on launch efficiency. A faster launch may result in an earlier start; a slower launch may delay it. Once all boats are launched, remember to line up by boat number (e.g., 1-50 on Day 1, reversed 50-1 on Day 2). The start boat will be waiting at the buoys, maintaining a close, single-file line. Flight times can be anticipated at 7:00 AM and 7:30 AM the start boat will wave/siren each tournament boat to take off. Exact times will be discussed at the rules meeting.

T O U R N A M E N T R U L E S

BOAT CHECK-IN — Follow SAWT rules.

SAWT will have a Marshall checking boats to ensure all rules are being met.

The eTournament Fishing app automatically converts fish length (cm to lbs). When submitting fish, teams select the length, which is then converted to weight for calculating all results.

Of the 10 submitted fish, the team's 5 longest will comprise their daily basket. The app automatically selects the 5 longest for calculating the daily total weight. Final standings are determined by the combined total weight from Day 1 and Day 2.

Any duplicate fish will be examined individually to confirm they are distinct. If they are the same fish, one will be disqualified and the next fish culled will be added to total.

Participants must check in to the event via the eTournament Fishing app before the start, while a strong cellular or Wi-Fi connection is available. This enables the app's online functionality when service is good and offline mode when service is poor or nonexistent. To check in, open the app, navigate to your registered event, and tap the "Check-In" box. Refer to the eTournament Fishing participant tutorial videos for detailed instructions.

It is strongly recommended to watch the eTournament Fishing participant tutorial videos and familiarize yourself with the fish submission process. Participating in the free practice tournament within the app is also recommended to practice submitting fish before any live event.

For the SAWT format, a measurement photo and a release video are required for each fish submission.

Out of bounds will be posted on the APP; if a fish is submitted from an out-of-bounds location, the AFC will contact the team and disqualify the fish.

MEASUREMENT PHOTO

Immediately after catching a fish to be submitted, the participant must take the measurement photo.

The measurement photo must be taken from directly overhead ("straight down perspective") with no angle. Avoid casting shadows on the fish.

The measurement photo must clearly show the entire fish and be in focus. Providing a clear photo for accurate verification is the participant's sole responsibility.

The measurement photo must clearly show the fish's tail (pinched or unpinched) on the measuring board for accurate length measurement. If the tail touches or crosses a graduation line, rounding up to the nearest cm is permitted.

The minimum length for fish submission is 40cm. Fish not reaching the 40cm mark do not meet the minimum length requirement and cannot be submitted.

If a trophy photo is required, follow the sequence shown in the eTournament Fishing app. The trophy photo should clearly showcase the fish, emphasizing its size and clearly identifying the angler who caught it. Trophy photos may be used for promoting future events and by anglers in their in-app profiles. Clear, professional-quality photos are highly encouraged.



RELEASE VIDEO

After taking the measurement photo and/or trophy photo, the participant will take the release video.

The release video must show the fish being lifted off the measuring board and completely released back into the water.

If a trophy photo is required, the release video may begin immediately after the photo is taken.

CRITICAL: Verify your video recorder's timer is actively running after pressing record to guarantee the video is capturing.

Failure to clearly show the fish's release in the video will result in the submission being rejected.

After taking the measurement photo and release video, tap the green "SUBMIT" button, then tap "OK" to begin uploading the fish submission.

You can track your fish submission status. "Being Uploaded" indicates the submission is in progress. "Pending Review" confirms the upload is complete and the tournament director has received it.

At the end of the day or after your final submission, ensure all submissions are "PENDING REVIEW." If any are still "Being Uploaded," log out and back into the app to restart the upload. Once all submissions are "PENDING REVIEW," they have been successfully uploaded.

ATTENTION ALL PARTICIPANTS

Participants are responsible for ensuring all fish submission elements comply with the guidelines. Visit www.eTournamentFishing.com for participant tutorials on app functionality and the fish submission process.

APP USE IN AREA WITH POOR OR NO CELLULAR SERVICE

The eTournament Fishing app records your catch with or without a cellular data or Wi-Fi connection. However, you must check in before the event starts while connected to cellular data or Wi-Fi.

Open the app, go to your registered event, and tap the "Check-In" box. See the user tutorials at www.eTournamentFishing.com for more information.

Protests must be submitted to SAWT staff in writing within 60 minutes of the boat check-in time. The written protest must detail the alleged violation, identify the angler involved, and state the time of the violation. A \$100 cash protest fee is required, refundable if the protest is upheld. SAWT staff will investigate and make a final, non-appealable ruling. Unfounded or inconclusive protests forfeit the \$100 fee, which will be added to the event payout. Contestants agree to provide phone records if requested by SAWT staff during an investigation.

A live leaderboard will be published at the end of Day 1, displaying only weights associated with confidential PINs, but without boat numbers or names.

A daily big fish payout will be awarded to the team with the largest fish. Ties will be broken by comparing the actual pictures to see which fish truly appears the biggest.

Fish (cm)	Fish (lbs)	Fish (cm)	Fish (lbs)	Fish (cm)	Fish (lbs)	Fish (cm)	Fish (lbs)
45	2.06	56.5	4.08	68	7.11	79.5	11.36
45.25	2.09	56.75	4.13	68.25	7.19	79.75	11.46
45.5	2.13	57	4.19	68.5	7.26	80	11.57
45.75	2.16	57.25	4.24	68.75	7.34	80.25	11.68
46	2.2	57.5	4.3	69	7.42	80.5	11.79
46.25	2.24	57.75	4.35	69.25	7.51	80.75	11.9
46.5	2.27	58	4.41	69.5	7.59	81	12.01
46.75	2.31	58.25	4.47	69.75	7.67	81.25	12.12
47	2.35	58.5	4.52	70	7.75	81.5	12.24
47.25	2.38	58.75	4.58	70.25	7.84	81.75	12.35
47.5	2.42	59	4.64	70.5	7.92	82	12.46
47.75	2.46	59.25	4.7	70.75	8	82.25	12.58
48	2.5	59.5	4.76	71	8.09	82.5	12.69
48.25	2.54	59.75	4.82	71.25	8.18	82.75	12.81
48.5	2.58	60	4.88	71.5	8.26	83	12.92
48.75	2.62	60.25	4.94	71.75	8.35	83.25	13.04
49	2.66	60.5	5	72	8.44	83.5	13.16
49.25	2.7	60.75	5.07	72.25	8.52	83.75	13.28
49.5	2.74	61	5.13	72.5	8.61	84	13.4
49.75	2.78	61.25	5.19	72.75	8.7	84.25	13.52
50	2.83	61.5	5.26	73	8.79	84.5	13.64
50.25	2.87	61.75	5.32	73.25	8.88	84.75	13.76
50.5	2.91	62	5.39	73.5	8.97	85	13.88
50.75	2.95	62.25	5.45	73.75	9.07	85.25	14
51	3	62.5	5.52	74	9.16	85.5	14.13
51.25	3.04	62.75	5.58	74.25	9.25	85.75	14.25
51.5	3.09	63	5.65	74.5	9.35	86	14.38
51.75	3.13	63.25	5.72	74.75	9.44	86.25	14.5
52	3.18	63.5	5.79	75	9.53	86.5	14.63
52.25	3.22	63.75	5.86	75.25	9.63	86.75	14.76
52.5	3.27	64	5.92	75.5	9.73	87	14.88
52.75	3.32	64.25	5.99	75.75	9.82	87.25	15.01
53	3.36	64.5	6.06	76	9.92	87.5	15.14
53.25	3.41	64.75	6.14	76.25	10.02	87.75	15.27
53.5	3.46	65	6.21	76.5	10.12	88	15.4
53.75	3.51	65.25	6.28	76.75	10.22	88.25	15.53
54	3.56	65.5	6.35	77	10.32	88.5	15.67
54.25	3.61	65.75	6.42	77.25	10.42	88.75	15.8
54.5	3.66	66	6.5	77.5	10.52	89	15.93
54.75	3.71	66.25	6.57	77.75	10.62	89.25	16.07
55	3.76	66.5	6.65	78	10.73	89.5	16.2
55.25	3.81	66.75	6.72	78.25	10.83	89.75	16.34
55.5	3.86	67	6.8	78.5	10.93	90	16.48
55.75	3.92	67.25	6.87	78.75	11.04		
56	3.97	67.5	6.95	79	11.14		
56.25	4.02	67.75	7.03	79.25	11.25		

Calculated results within the mobile application may vary slightly. **All entries are processed using the same standardized method** to ensure fairness across all anglers. The provided chart is for reference only. Final results are based on the mobile application's calculations, which are performed at every 0.5 cm increment.



